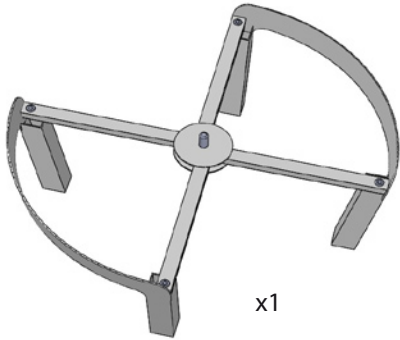
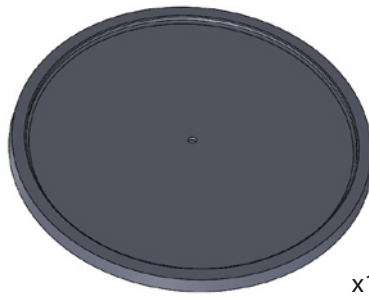


INVENTAIRE / INVENTORY



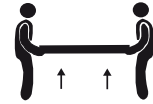
x1



x1

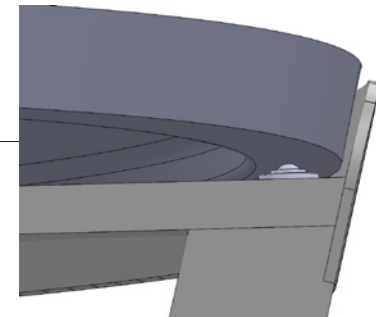
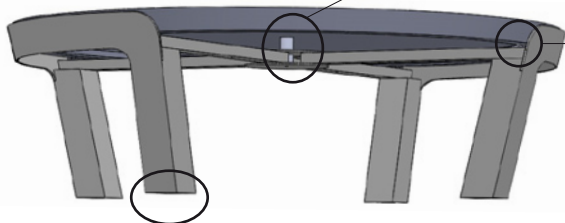
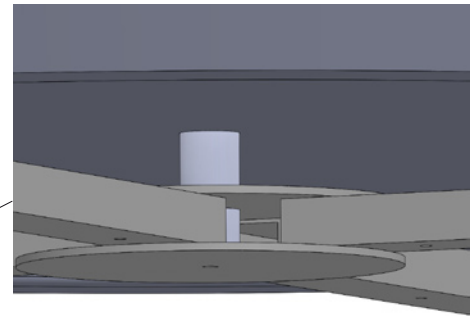
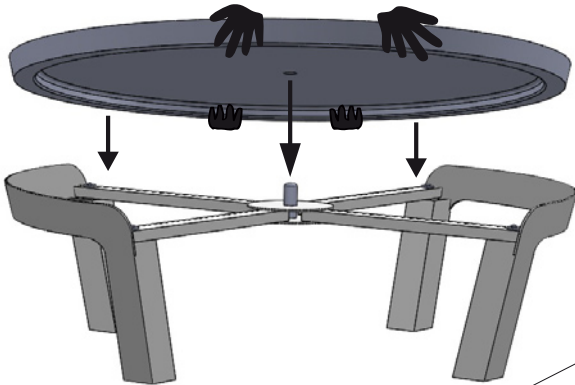


Plateau lourd et fragile
Heavy and fragile tabletop

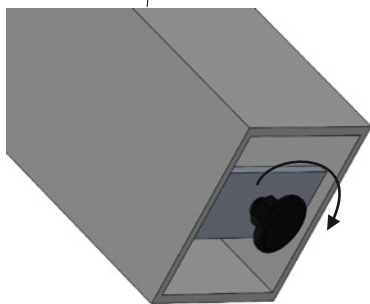


Poser le plateau sur la structure / Put the tabletop on the structure

L'axe de centrage doit être dans le trou sous le plateau
The centering axis should be in the hole under the tabletop



Régler les patins sous les pieds pour que le plateau soit parfaitement plan et repose sur les 4 billes
Adjust the pads under the feet in order to have a perfectly flat tabletop based on 4 balls.



Afin de garantir la pérennité de votre table, nous vous conseillons d'acheter la housse de protection COVER_TLR
In order to assure the sustainability of your table, we recommend you to buy the protecting cover COVER_TLR.